

## TRAIL DEDICATED TO DR. KATHY CANTWELL AT PRAIRIE CREEK PRESERVE

On September 10, friends of Dr. Kathy Cantwell dedicated a trail to her memory at Prairie Creek Preserve. The mile long Cantwell Trail starts at a new trailhead near Prairie Creek Lodge, and links to the Susan Wright Trail which begins at a Rochelle trailhead along the Gainesville-Hawthorne Rail Trail.

The Cantwell Trail is marked with blue blazes – blue to symbolize her commitment to blue skies and blue springs, and because we are blue that she left us too soon. Her trail traverses several distinct forest types, including a mixed hardwood hammock, pine flatwoods, and a cypress swamp. Remnants of old turpentine trees and pots can be

2

FALL 2011

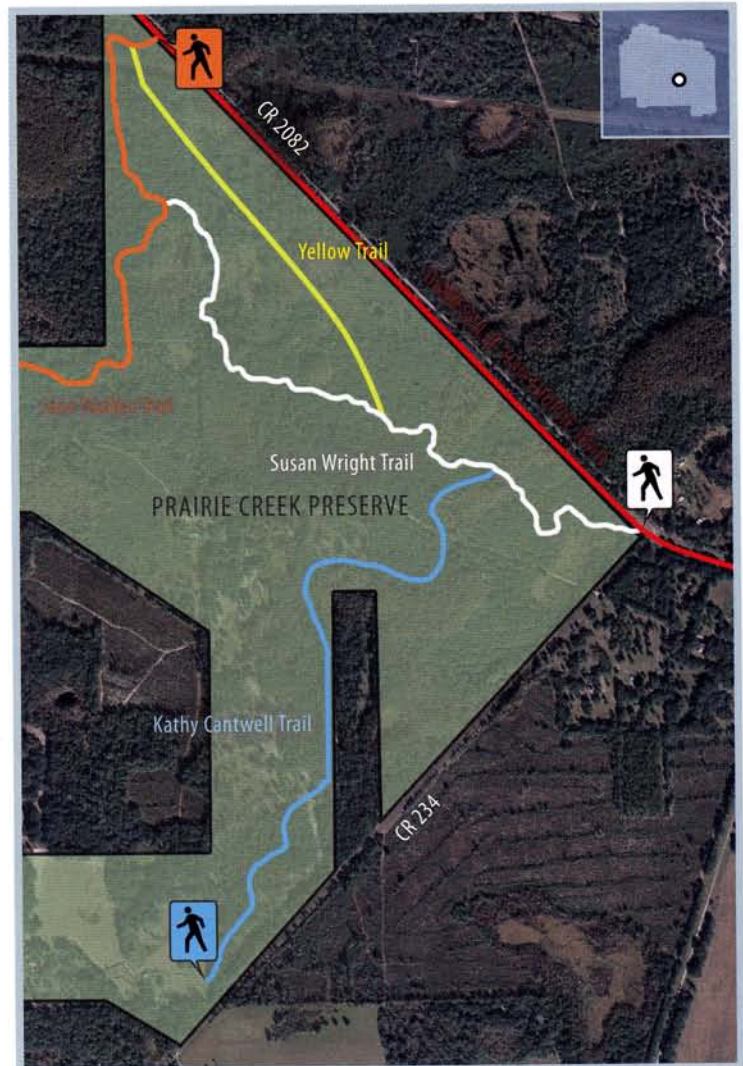
seen in numerous places, and the legacy of former forestry practices and Depression-era drainage projects are evident. We're still looking for funding to complete boardwalks across the wetlands.

Dr. Cantwell was a tireless advocate for environmental causes, with her commitment to land conservation being the last chapter in her career. In 2002, she was recognized by ACT as a "Conservation Steward." Kathy became the unpaid staff of ACT's sister land trust, the Putnam Land Conservancy, and succeeded in getting major land acquisition projects funded and purchased. Her final act was to make sure the Prairie Creek Conservation Cemetery was open in time to accept her remains – she was our green cemetery's first customer in July, 2010.

The Cantwell Trail is almost completely shaded, and is open for hikers, bicyclists, and horseback riders. Parking is available at Witness Tree Junction (at intersection of CR 234 and CR 2082) or at Prairie Creek Lodge (7204 SE County Road 234).



Entrance sign to the Kathy Cantwell Trail



Trail system on the eastern side of Prairie Creek Preserve